

1.



A. Clydesdale

B. Percheron

C. Hackney

D. **Arabian**

2.



A. Clydesdale

B. Paint

C. Arabian

D. Morgan

3.



A. Morgan

C. Arabian

B. Icelandic Pony

D. Shetland Pony

4.



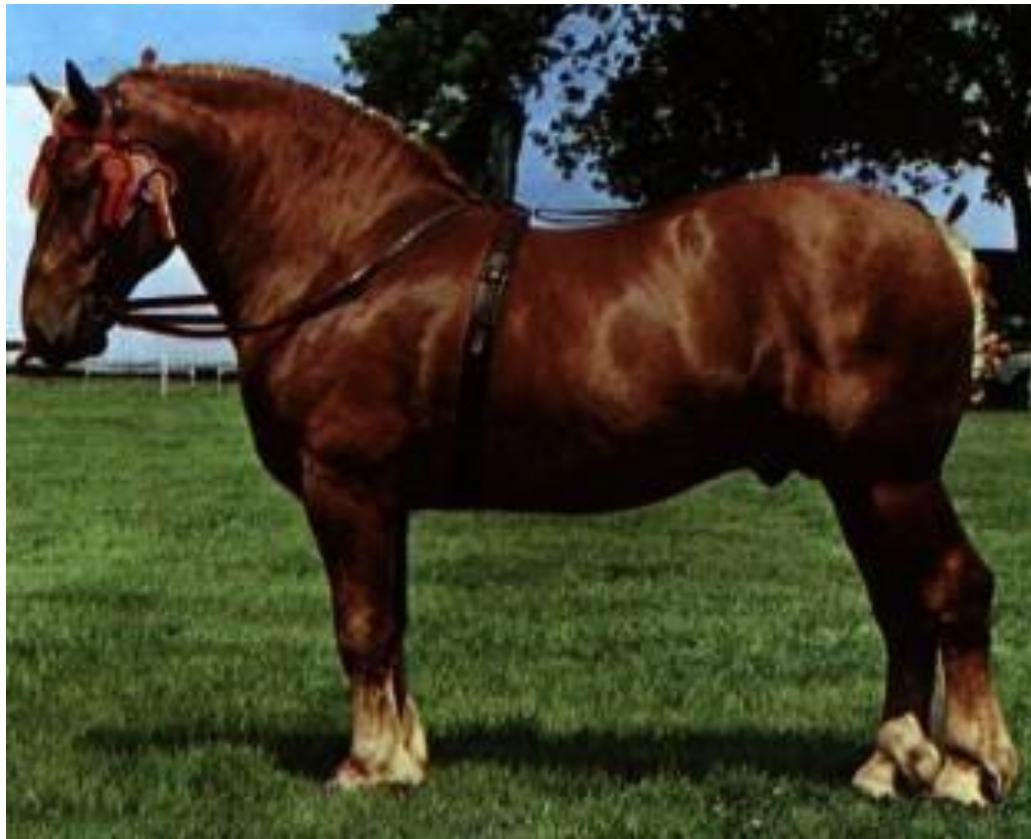
A. Morgan

C. Arabian

B. American Saddlebred

D. Tennessee Walking Horse

5.



A. Morgan

C. **Suffolk**

B. Haflinger

D. Tennessee Walking Horse

6.



A. Oldenburg

B. Haflinger

C. Suffolk

D. **Arabian**

7.



A. Tennessee Walking Horse

B. Connemara

C. Suffolk

D. Quarter Horse

8.



A. Clydesdale

B. Lippizan

C. **Thoroughbred**

D. Arabian

9.



A. Haflinger

B. Lippizan

C. Thoroughbred

D. Arabian

10.



A. Suffolk

C. Percheron

B. Clydesdale

D. **Shetland Pony**



What type of bit is this?

A. Kimberwick

B. D- Ring Snaffle

C. Pelham

D. Smooth Snaffle



What type of bit is this?

A. Kimberwick

B. Snaffle

C. Port

D. Smooth Snaffle



What piece of equipment is this?

A. Splint boot

B. Ankle boot

C. Pastern boot

D. **Skid boot**

14.



What piece of equipment is this?

A. Surcingle

B. Bridle

C. Caveson

D. Grooming Halter

15.



What is the coat color pattern seen here?

A. **Bay Tobiano**

B. Bay Overo

C. Sorrel Tobiano

D. Sorrel Overo

16.



What is the coat color pattern seen here?

A. Bay Tobiano

B. Bay Overo

C. Sorrel Tobiano

D. Sorrel Overo

17.



What is the coat color seen here?

A. Grey

B. Buckskin

C. Grulla

D. Dun

18.



What is the coat color seen here?

A. Bay Roan

B. Blue Roan

C. Cremello

D. Dun

19.



Identify the face marking seen above.

A. Blaze Face

B. Bald Face

C. Star

D. Snip

20.



Identify the face marking seen above.

A. Strip

C. Nose

B. Stripe

D. **Snip**