

Bar top table



Material List

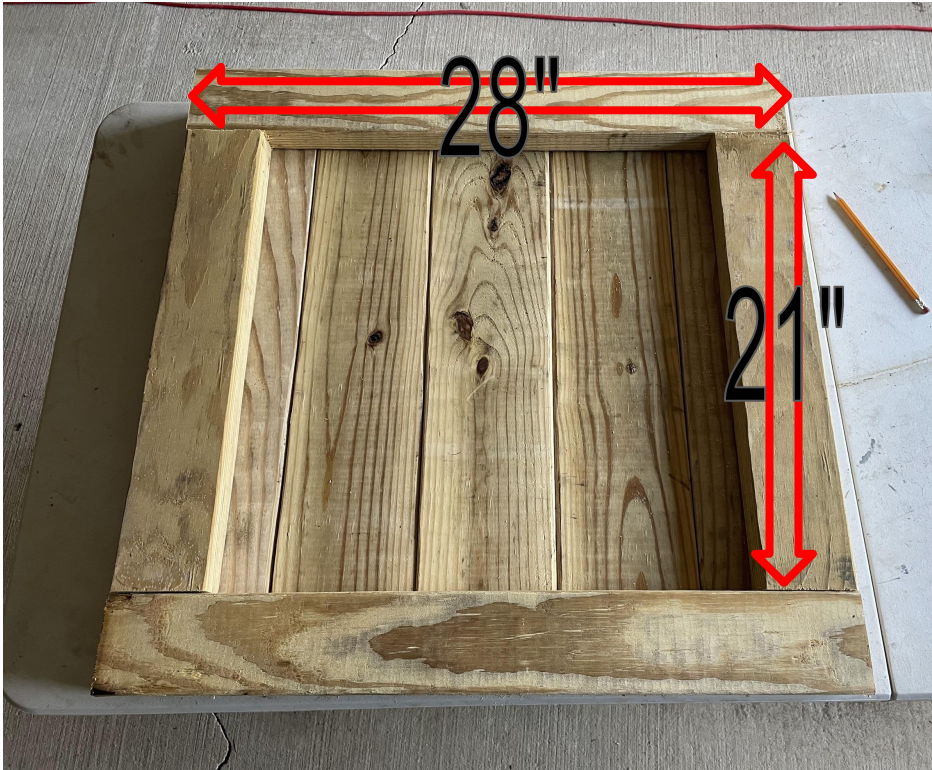
- 1-2x6x12 ripped to 5 $\frac{3}{8}$ "
- 8- 2x6x12 treated
- 2- 2x4x12 treated
- 4- 6"x $\frac{1}{2}$ " carriage bolts
- Large box of 3 in screws

Step 1



Start by cutting 5 pieces off the ripped treated 2x6 to 28" long and arrange them so that they have even gaps between each board.

Step 2

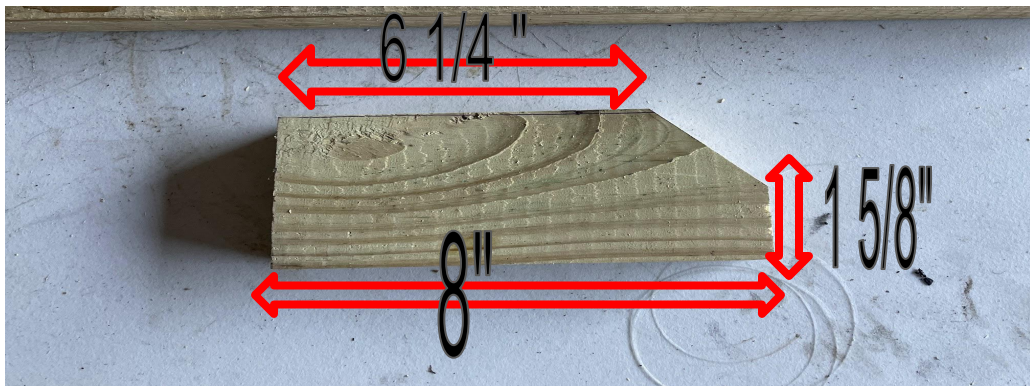


Next take the 2x4 and cut 2-28" pieces and 2-21" pieces and position them to form a frame. Screw those pieces into the table top pieces using the 3" screws.

Step 3

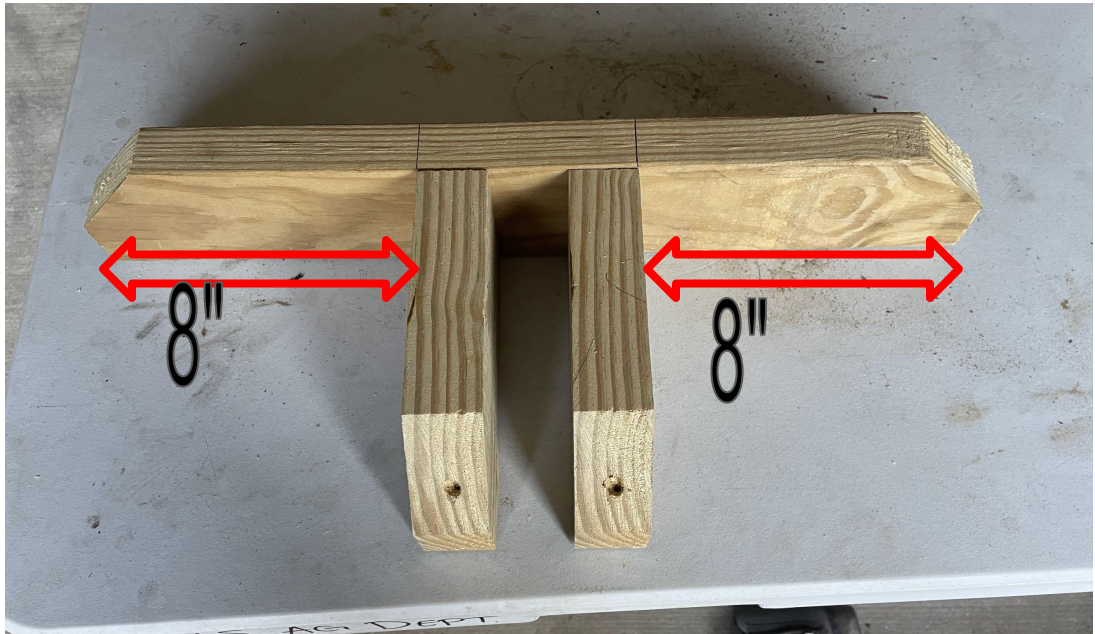


Using the 2x4 cut 2-21" pieces and on each end measure an $1 \frac{5}{8}$ " and cut a 45 degree notch out of each end.



Using the 2x4 cut 4-8" pieces again marking $1 \frac{5}{8}$ " on only one end and making a 45 degree notch above that mark

Step 4



Taking the braces make 2 of these braces each small brace will be 8" from each end of the long brace.

Step 5



Place both braces into the table and put a screw into each angle on the end of each brace securing it to the table top.

Step 6



Next cut 4- 44" pieces out of a 2x6. Next, cut 15 degree same angles on each end of the leg.

Step 7



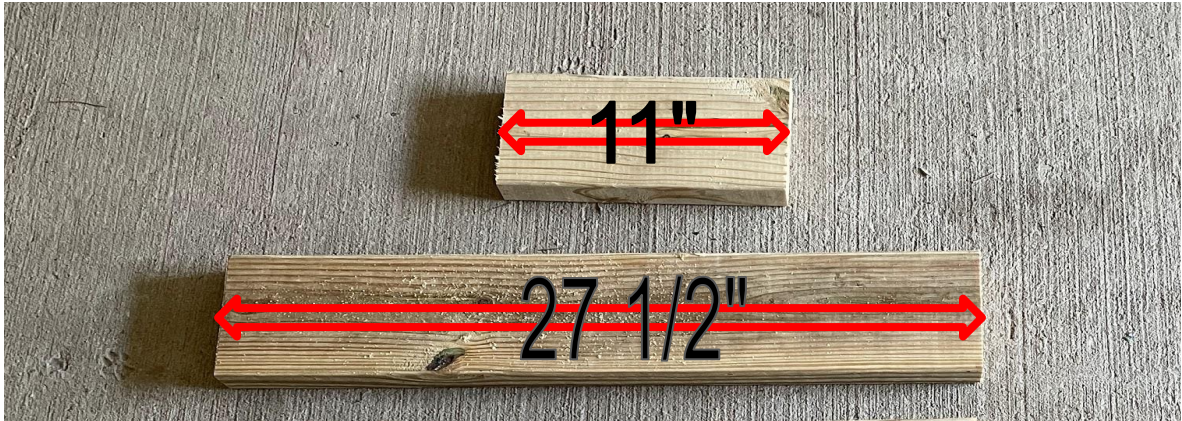
Next, place each leg into the braces it is important that the tip of the 15 degree angle of the legs are $4 \frac{3}{4}$ " apart. The legs separated by the long braces will already be $4 \frac{3}{4}$ " apart. You have to gap the ones that are in between the long braces.

Step 8

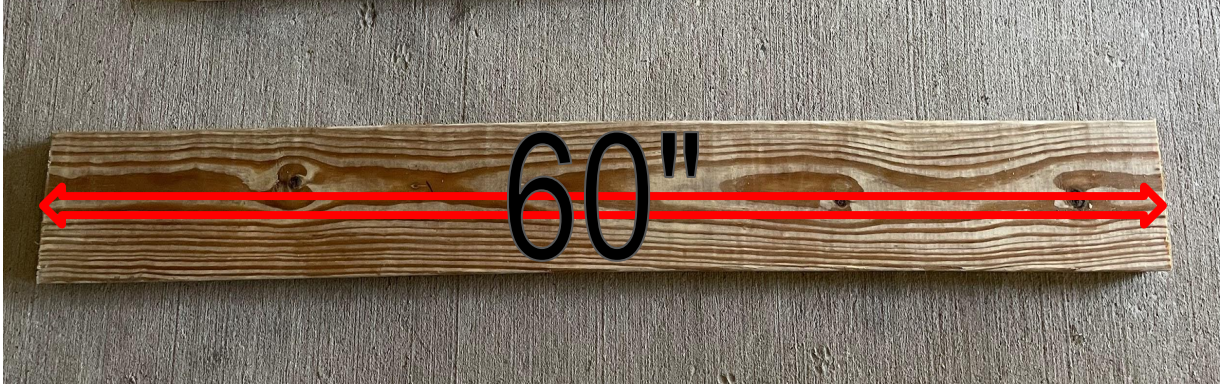


Once in place use the screws and put three into the side of each brace tightening the legs to the braces.

Step 9



Next, begin building the seat braces by cutting from a 2x6, 4- 11" pieces.
4- 27 1/2" pieces.

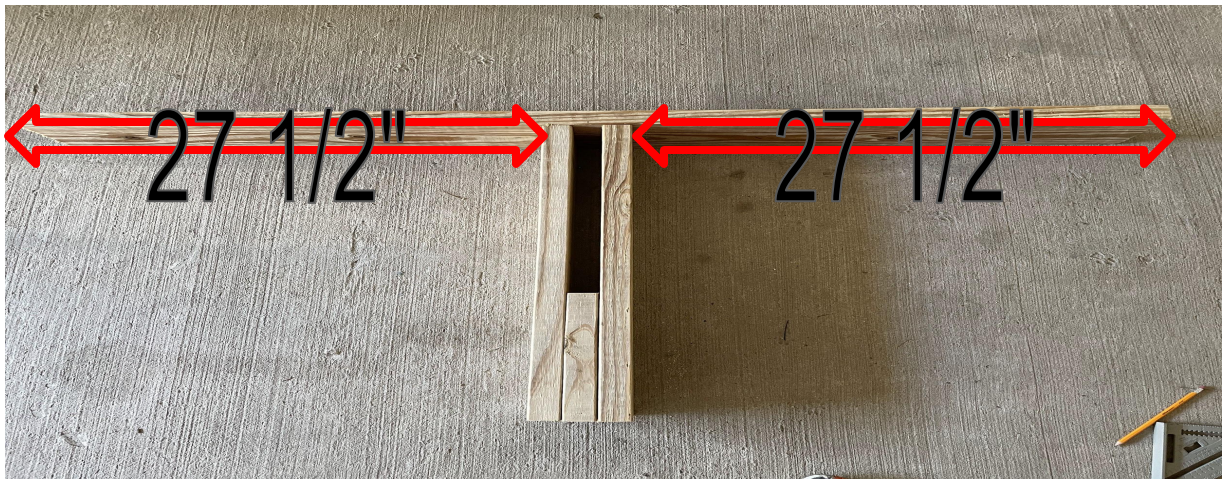


Finally, Cut from a 2x6, 2- 60" pieces

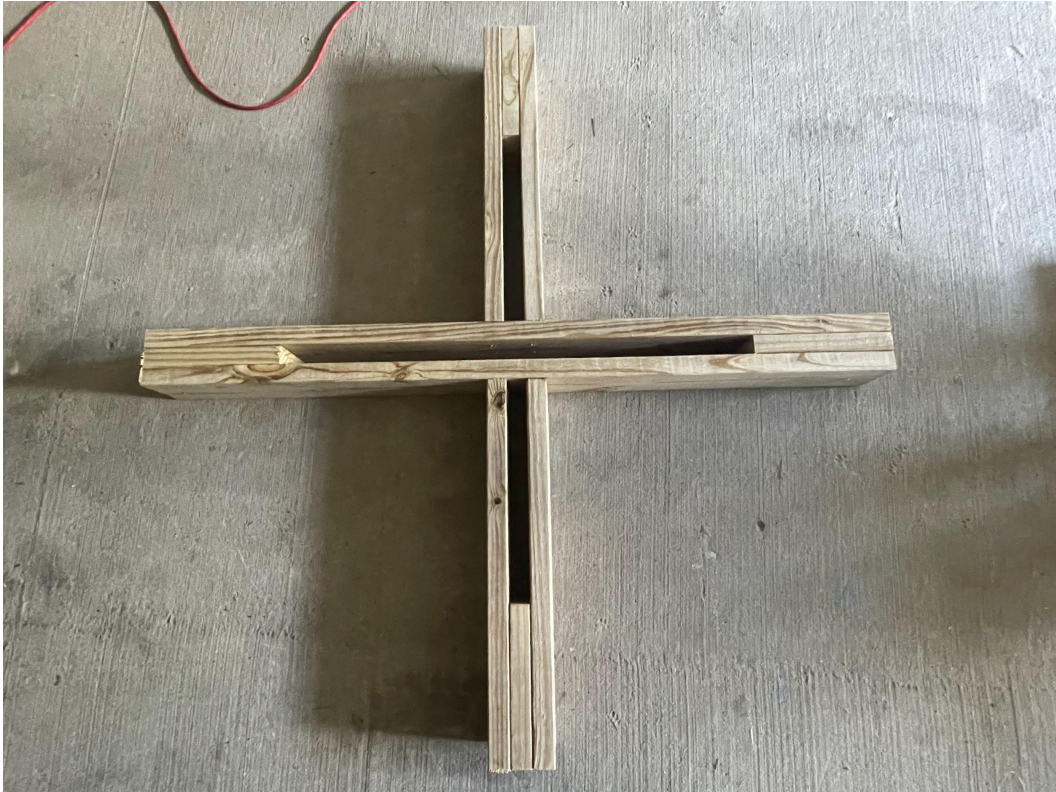
Step 10



Take the 27 1/2" seat braces and position them in a "T" with the 60" brace. The 27 1/2" brace should be 27 1/2" from the end of the 60" brace.



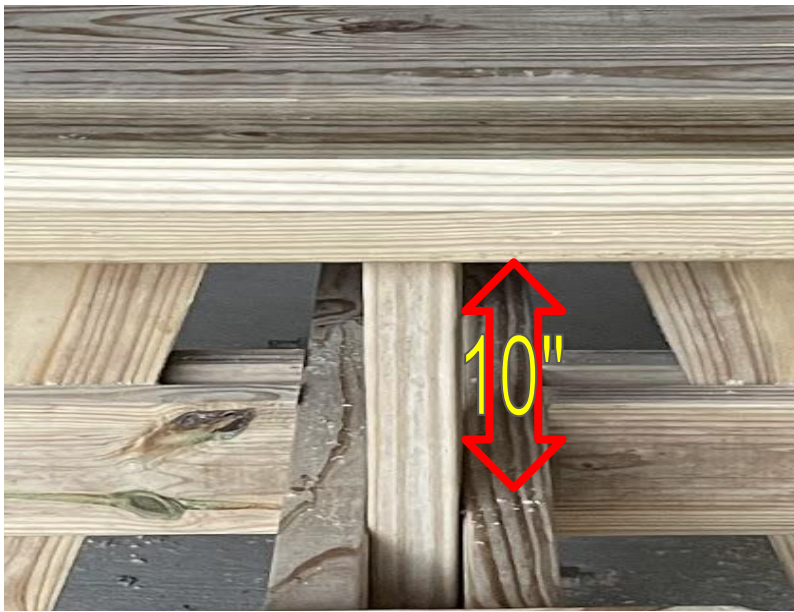
Step 11



Once both "T" braces are put together join them to form the full seat brace.



Before sliding the brace over the legs and into place mark and drill out the holes for the carriage bolts using a $\frac{1}{2}$ " drill bit.



Slide the seat braces over the bottom of the legs and slide to where the top of the seat brace and the bottom of the table top braces are 10" from each other.



Once on, finishing drilling out the hole in the legs using the pre drilled holes in the braces and insert the 6" carriage bolts and tighten.



For the seats cut out of the 2x6 8-14" pieces and cut off each corner a 2"x2" notch.



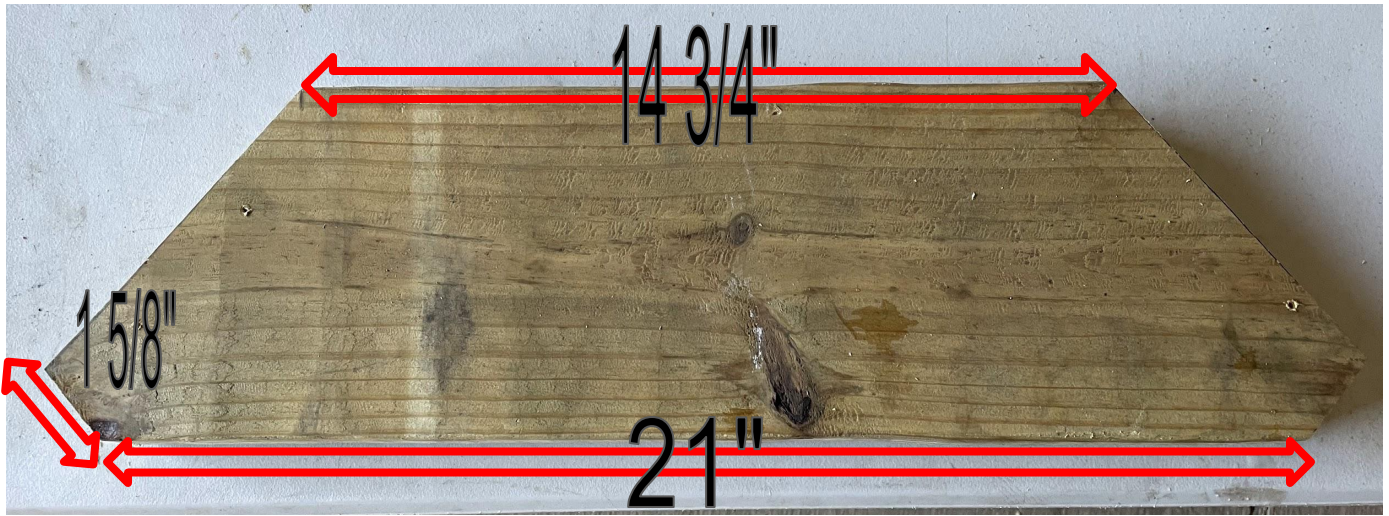
Place on the each end of the seat braces and gap $\frac{1}{4}$ " and secure down with the 3" screws.



Using the 2x6 cut 8- 8" pieces then cut 15 degree same angles on each end.



Place one on each side of the legs and secure with the 3" screws.



Using the 2x6 make 4- pieces from the above picture the angle of the on the end of the board is a 45 degree angle.



Screw into place.



Finally, round off the edges of the table and seats using a router.





Continue finishing the project by sanding.

Final Product