

# Agronomic Disorders Practicum

100 easy points

# Causal Category

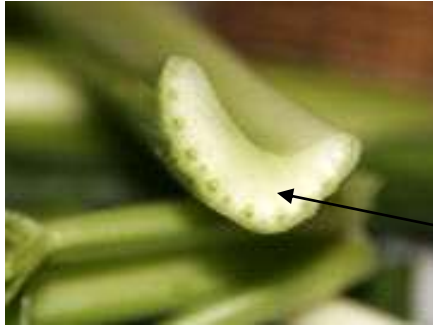
- Cultural: Anything man caused by his cultural practices. Deals with Nutrition (fertilizer), chemical (insecticide), or mechanical (drunk tractor driving)
- Biological-Bugs you can see (insects) and bugs you can't see (virus, bacteria, fungus)
- Environmental-Weather related
- Not brain surgery

# Agents

- 700-703-----Cultural (100)
- 704-708-----Biological (101)
- 709-716-----environmental (102)

Easy Cheesy

# Parts of plant damaged



Cross section of a celery stalk showing vascular bundles which include the xylem and phloem.

Vascular system is like your veins that run through the human body carrying blood except in plants it carries water and sugar

Vegetative parts are leaves, stems, and roots

Everything else is candy

# #1



101 Biological

704 Nematodes

062 Vegetative Parts

#2



102

713

064

#3

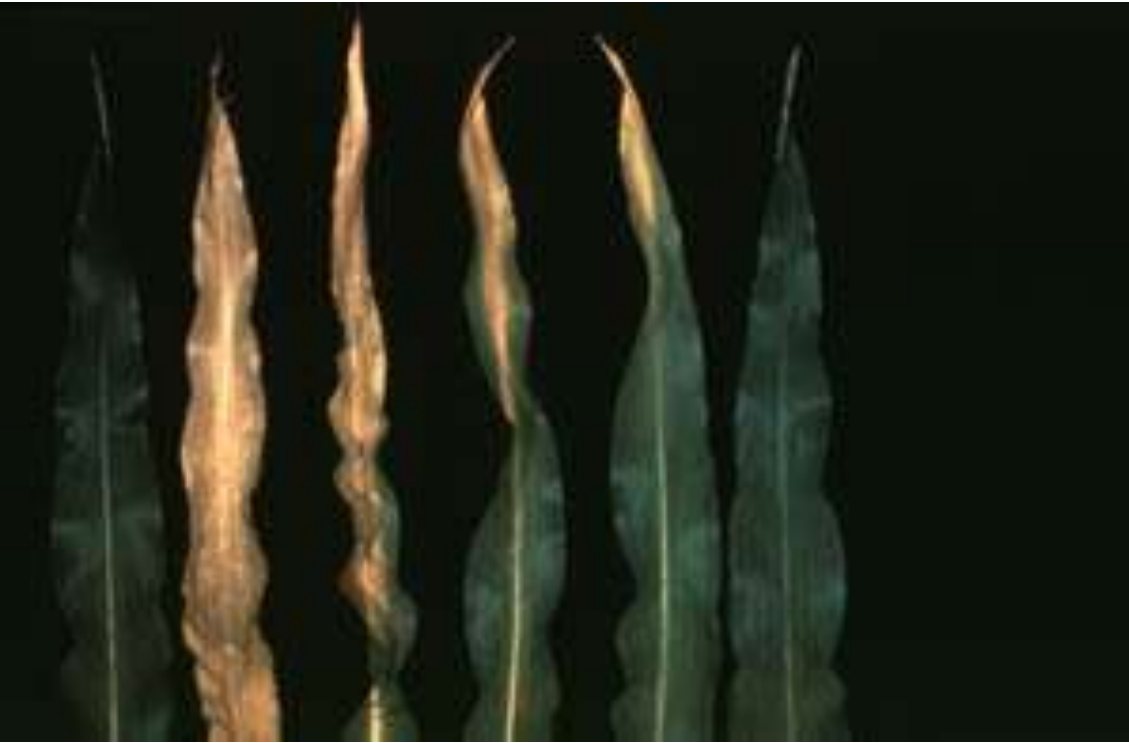


101

708

062

#4



100

700

062



#5



101

707

062

“leafminers”

#6



101

707

062

“spidermites”

#7



100

700

062

#8



101

707

063

Ambrosia  
Beetles

#9



100

700

061

Boron  
deficiency in  
peanuts

# #10



100

700

061

Calcium  
deficiency in  
tomatoes (blossom  
end rot)

# #11



101

707

062

Aphids

# #12



100

700

062

K deficiency in alfalfa is white spots on outer edge of the leaf



# #13



101

707

062

4-lined plant bug

#14



102

709

064



# #15

*Prescott, J.M., P.A. Burnett, E.E. Saari et al. 1986. Wheat Diseases and Pests: A Guide for Field Identification. CIMMYT, Mexico, D.F., Mexico.*



102

716

062

Heat causes leaves to  
curl up to conserve  
moisture

# #16

*Prescott, J.M., P.A. Burnett, E.E. Saari et al. 1986. Wheat Diseases and Pests: A Guide for Field Identification. CIMMYT. Mexico. D.F., Mexico.*



101

707

062

Aphids, stripes  
on leaves

# #17



101

708

062

rust

*Prescott, J.M., P.A. Burnett, E.E. Saari et al. 1986.  
Wheat Diseases and Pests: A Guide for Field  
Identification. CIMMYT, Mexico, D.F., Mexico.*

# #18

101

708

062

mildew



*Prescott, J.M., P.A. Burnett, E.E. Saari et al. 1986. Wheat diseases and Pests: A Guide for Field Identification. CIMMYT. Mexico, D.F., Mexico.*

# #20



101

708

064

“Damping  
off”

# #21



101

706

062/064

“Blight”  
shown by  
angular leaf  
spotting and  
black craters  
on bolls





#22



100

701

062

Herbicide  
damage

# #23



101

706

062

Stewarts wilt in corn  
caused by bacteria early  
or late in corn life



# #24



101

708

062

Corn rust

#25



101

708

064

Corn smut

#26



101

708

062

Soybean rust

#27

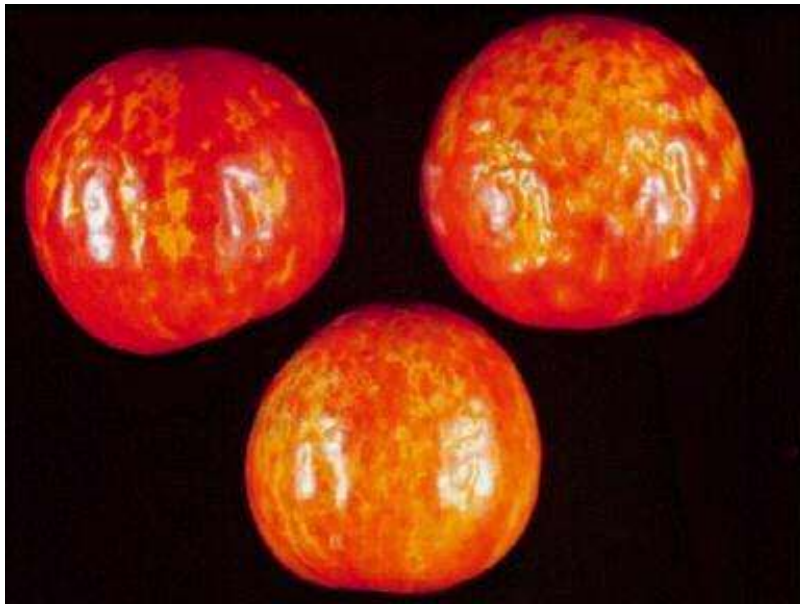


101

705

062

Mosaic virus



#28

101

705

064

Mosaic virus

Dark spots on leaf  
are raised and  
crinkled



# #29



100

700

062

P deficiency causes  
purple in corn



# #30



101

706

062

Infection  
from bacteria

# #31



101

706

062

Canker (tumors) from  
bacteria

Note: Mostly found  
on fruit trees not  
agronomic plants

#32



101

707

062

Scale insect

# #33



101

707

062

Caterpillar  
damage and feces

#34



101

707

061

Typical  
stinkbug  
damage to  
soybeans

# #35

Bleached white areas on  
new transplants can  
mean sun damage



# #36



102

710 maybe 712

062

Wind or hail damage  
will tear or shred  
leaves

#37



101

707

062

SLUGS OR  
SNAILS WILL  
EAT THE LEAF  
FROM THE  
OUTSIDE  
MARGIN TO  
THE MIDDLE



# #38



100

701

062

Roundup  
overspray.....  
leaf curls up,  
bumpy, with  
damage  
apparently  
starting from  
the outer or  
top of the leaf  
before  
dramatic color  
change

# #39



Same as 38

#40



# #41



101

707

062

#42



101

707

062

#43



101

707

062

# #44



101

707

064

# #45



102

712

064



#46



101

704

062

#47



101

706

061

# #48



101

708

062

#49



102

709

062

#50



100

701

062