

## Louisiana Foundational SAE Supervision Plan

This supervision plan was developed from resources in the teacher guide of SAE for All. Go to [www.saeforall.org](http://www.saeforall.org) for all resources.

### Louisiana SAE for all student plan

Set aside classroom time throughout the term for SAE development, coaching and feedback. Conduct SAE conversations with each student. **Keep a copy of the answers to these questions on file.** Encourage record keeping, skill attainment and growth of all SAE's as students progress through your program.

### Instructional Time Estimated

Four 50-minute periods (4% of instructional time)

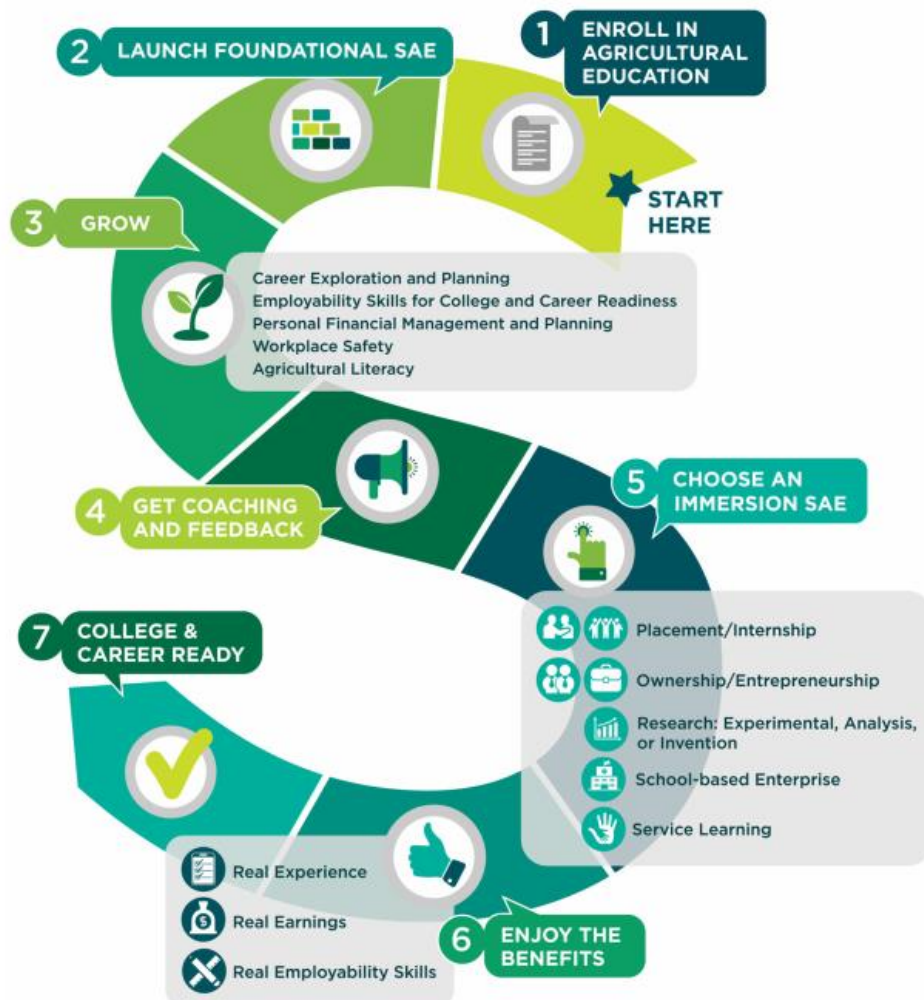
**Foundational SAE:** No matter where a student enters an agriscience program of study in Louisiana, it is important that they start a Foundational SAE in the first semester of enrollment. The SAE Roadmap provides a clear visual to help students, parents and administrators see that each student's Foundational SAE continues throughout their participation in agricultural education. It also shows how students can enrich the agricultural literacy component of the Foundational SAE by adding one or more Immersion SAEs. The Foundational SAE is a great fit for those students who take only one course in your program or come in and out throughout their high school experience. Using the Foundational SAE activities provided in the *SAE for All* curriculum, these students can grow in their agricultural experience and advance toward college and career readiness. You may even find that through intentional career exploration and planning more students will see the value in your program's sequence and increase your retention rate.

### Foundational SAE Supervision Conversation

For students with Foundational SAEs, review each student's work so far and ask the following:

1. What are the top three experiences you have had or lessons you have learned so far?
2. How has that influenced your thinking about your future and careers in agriculture?
3. What are you planning to work on next?
4. What assistance can I provide as your ag teacher?
5. Have you identified a career path?

6. Which Immersion SAE fits best with your career path?



*"The Louisiana FFA Association is a resource and support organization that does not select, control or supervise local chapter or individual member activities except as expressly provided for in the state FFA constitution, bylaws or policies."*

*FFA makes a positive difference in the lives of students by developing their potential for premier leadership, personal growth and career success through agricultural education.*